



S-6800

TOUCHPAD DIGITAL
DOOR LOCK

USER MANUAL



ALLEGION™

Product **Features**



Four Way Access Solution

Four entry options: PIN code, fingerprint and smart card/fob. The unit also has a key override feature.



Random Security Code Function

You may press any numbers randomly without limitation, and then enter your PIN code as the final sequence. This feature allows access without revealing your PIN code to others.



Individual Management for Smart Cards/Fobs

You are able to individually register or delete smart cards/fobs.



Panic Release Handle Type

This feature facilitates quick exits, opening the door easily with a simple lever action.



Highly Reliable Lock Type

The S-6800 features a reliable mechanical mortice lock.



Auto lock/Auto re-lock function

When the door is closed, the lock engages automatically. If users do not open the door after unlocking it, the lock will re-engage automatically.



Privacy function

When privacy function is activated, the door cannot be opened from outside, even with the registered card/fob or entry code.



Excessive force alarm

If excessive force is used to try to bypass the lock, the lock function is suspended and an alarm will sound.



Preventing illegal entry and hacking

If an incorrect entry code is used 3 times, the door lock function is suspended and an alarm will sound.



Battery level indicator

Replace batteries when low battery indicator light shows and alarm sounds.

Safety Precautions



Do not disassemble or alter the lock. Disassembling the door lock may damage the product. Damage to the product caused by unauthorised persons may void the warranty.



Please keep the product away from water or any liquids. If the product is exposed to water or liquids, please wipe the moisture off with a soft cloth. If moisture or foreign materials penetrate the product, remove the batteries immediately.



Please check the batteries every 6 months for leaks/cleanliness. If leakage is discovered, please wipe out with a dry cloth and replace with new batteries. In case of exposure to leakage, wash affected skin area with soap and water immediately.



Do not clean the product with flammable materials such as alcohol, benzene or thinners. Such materials may damage the surface of the lock or cause a fire.



Batteries should not be exposed directly to heat sources or submerged in water, because they may leak or explode, resulting in severe damage. Do not use damaged batteries.



Do not allow the battery electrodes to make contact with metals such as keys, as the battery may overheat, causing an explosion or severe damage.



Please do not close the door with the deadbolt in the locked position. It may damage the product or cause a malfunction.



Do not mix old and new batteries, or use different types of batteries. Ensure the + and - ends of the batteries are positioned correctly. Incorrect positioning may cause leaks and/or an explosion.

User Manual **Index**

Introduction & Basic Functions

Product components	4
Front of lock	5
Back of lock	6
Checking battery status	7
Replacing batteries	7
Emergency power	8
Manual override	8
Random security coding	9
Auto/manual locking system	9
Opening door from outside	10
Locking door from outside	11
Opening door from inside	12
Locking door from inside	12

Applications

Privacy function	13
Auto locking function	14
Auto-relocking function	14
Alarm & warning functions	15
System reset	16
Setting volume level	17

About Modes | Changing modes

Normal mode > safety mode (creating system manager)	18
Safety mode > normal mode	19

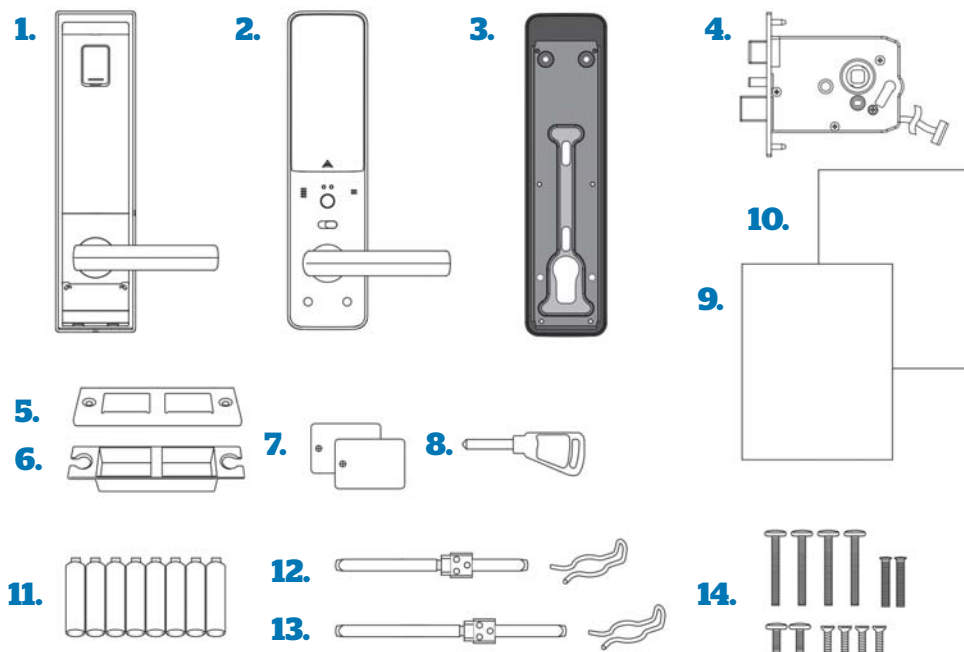
NORMAL MODE

Registering entry PINs	20
Registering cards/fobs	21
Deleting cards/fobs	21
Registering fingerprints	22
Deleting all fingerprint data	22
Registering fingerprint without fingerprint cover in place	23

SAFETY MODE

Registering entry PINs	24
Registering cards/fobs	25
Deleting all card/fob data	26
Deleting individual cards/fobs	26
Registering fingerprints	27
Deleting all fingerprint data	28
Deleting individual fingerprints	28
Creating temporary user PINs	29
Changing manager's PIN	30
Changing manager's card/fob	30

Product **Components**



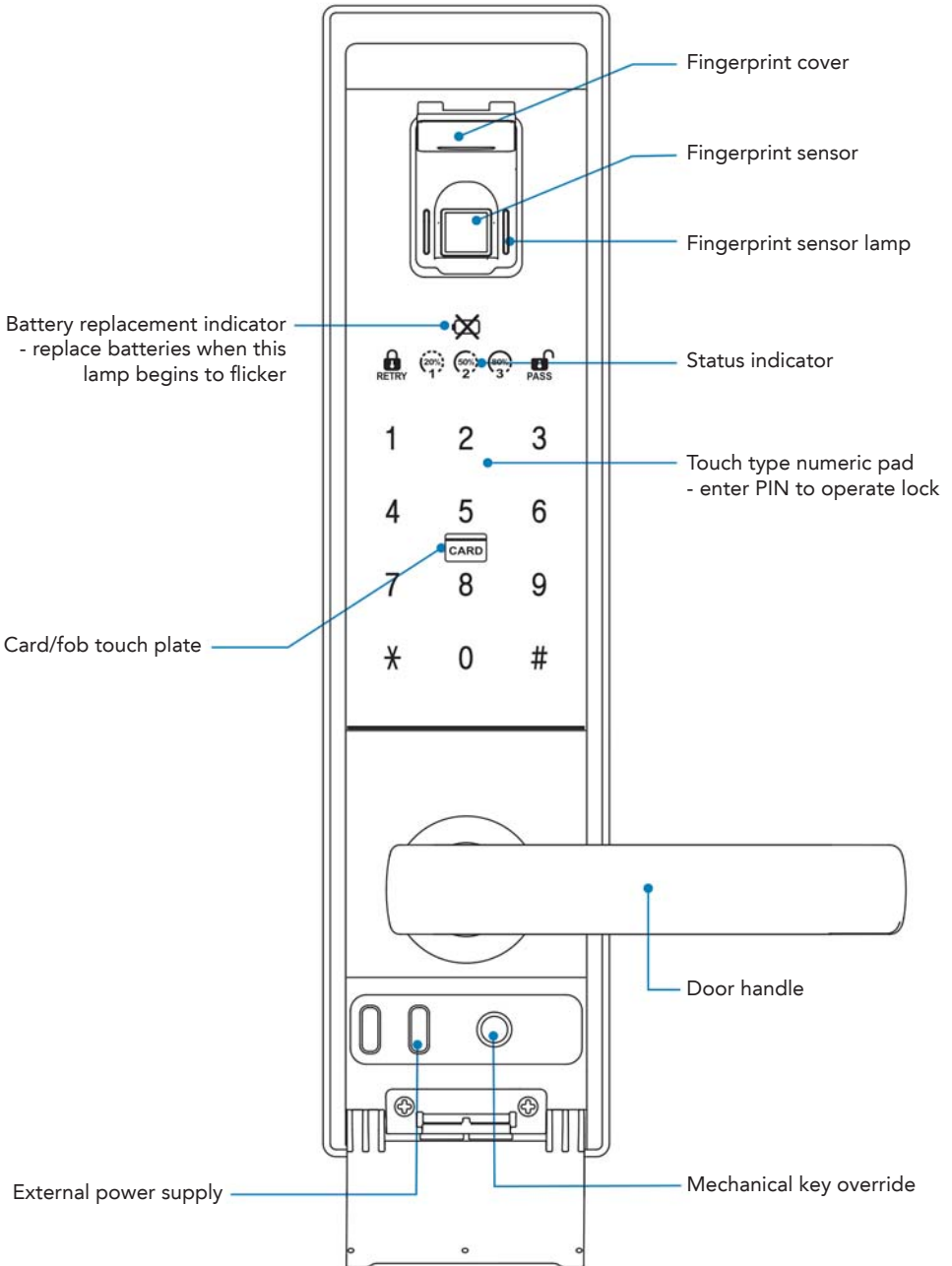
Name

1. Front assembly
2. Back assembly
3. Back cover
4. Mortice Lock
5. Strike plate
6. Strike housing
7. Card/fob
8. Key
9. User manual
10. Installation template
11. Batteries
12. Handle shaft (40-50mm thick door)
13. Handle shaft (50-90mm thick door)
14. Screws

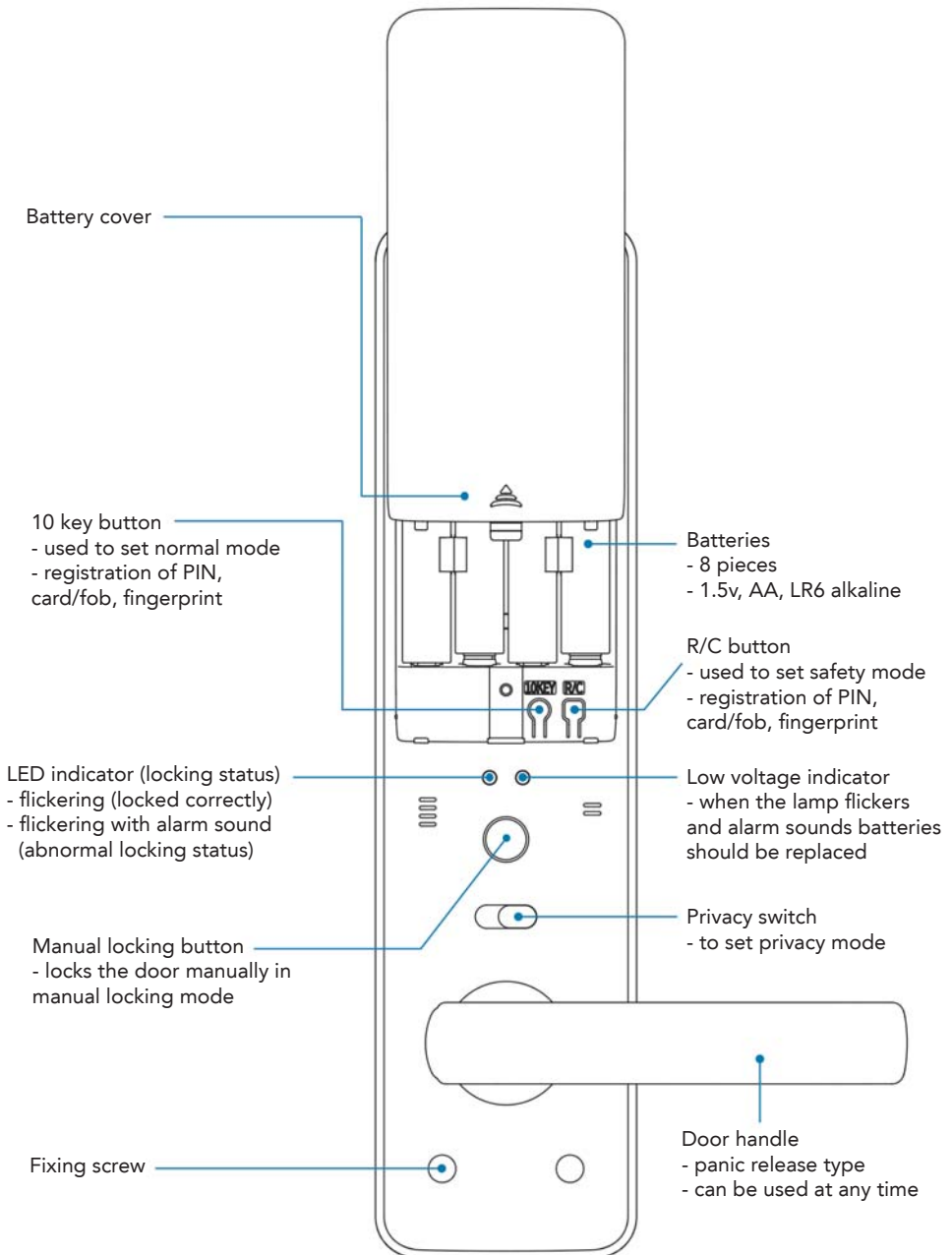
Specification/Detail

- 76mm (W) x306mm (H) x28mm (D)
- 71mm (W) x298.6mm (H) x30.7mm (D)
- 76mm (W) x303.6mm (H) x7.9mm (D)
- 123mm (W) x 109.5mm (H) x 24.5mm (D)
- 36mm (W) x 106mm (H) x 1.5mm (D)
- 24mm (W) x 102mm (H) x 18mm (D)
- 2x card, 2x fob, 2x patch
- 3x
- Includes warranty form
- For door preparation
- 8 pieces (1.5v, AA, LR6 alkaline)
- 89(W) X 12(H) X 12(D)mm + stop-ring
- 126.9(W) X 12(H) X 12(D)mm + stop-ring
- 5 x 30mm - 4 of each for back cover
- 5 x 24mm - 2 of each for inner lower part
- 5 x 8mm - 2 of each for inner upper part
- 3/16" x 1/2" - 4ea. for mortice and strike
- 4 x 19mm - 4ea. for front/back plate

Front of Lock

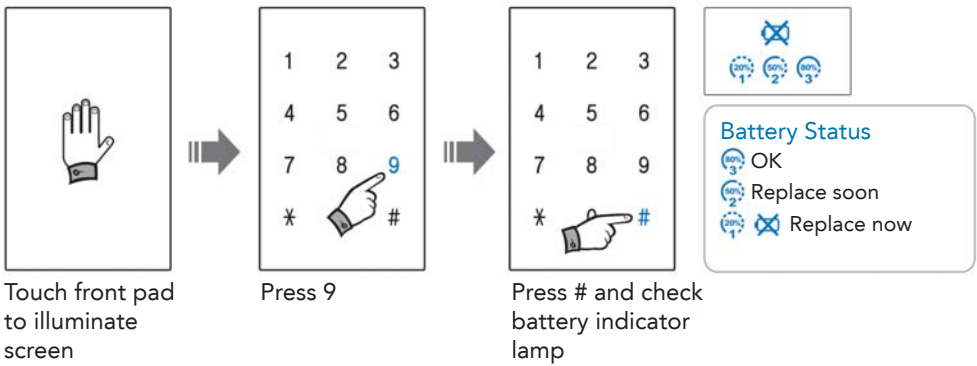


Back of Lock

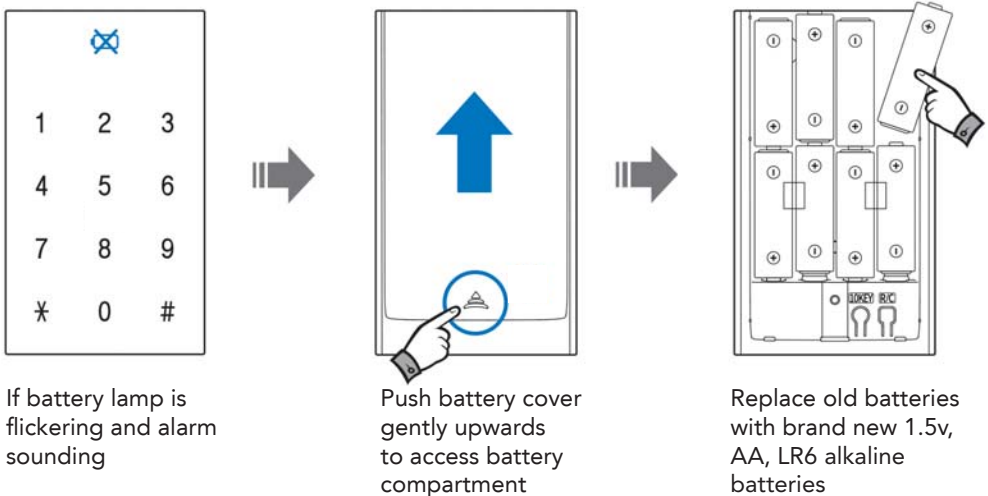


Battery Status & Replacement

Check battery status (door must be closed)



Battery replacement



NOTE

- The life of batteries is around one year, based on ten entries/exits per day.
- Battery life can vary depending on battery's manufacturer, production date, installation environment and usage frequency.
- Second hand batteries and/or the use of batteries other than those specified is likely to cause a malfunction.
- Do not use rechargeable batteries as battery leakage may occur.
- Check batteries at least every 6 months and if there is any leakage, replace with new batteries.

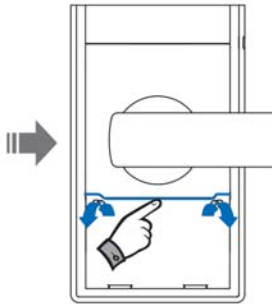
Emergency Power & Manual Override

How to apply external power if batteries run out

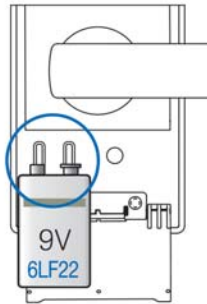
When the batteries are entirely exhausted, a 9V battery can be used on the emergency power terminals to allow access. Once the door lock has been reactivated by the 9V battery, access can be gained via PIN, card/fob or fingerprint. The batteries in the back of the lock can then be replaced (see p.7).



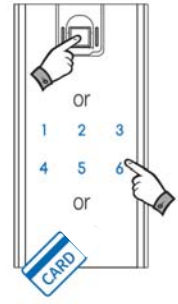
Front pad will not illuminate when batteries are exhausted



Open cover directly beneath front door handle

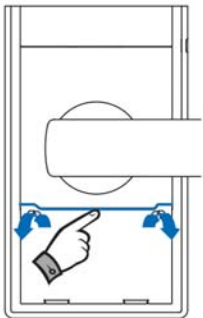


Touch terminals with 9V battery (place + and - on either terminal)

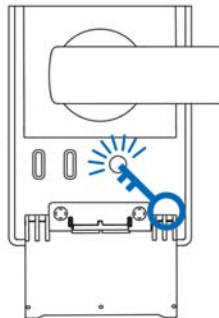


Access via PIN, card/fob or fingerprint

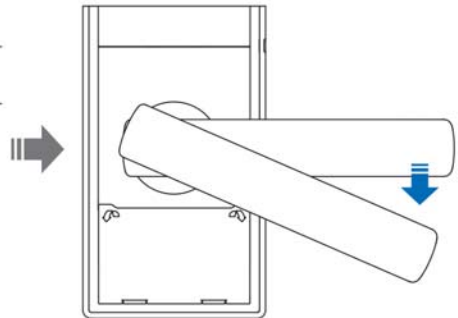
How to use mechanical override key



Open cover directly beneath front door handle



Insert manual override key and rotate



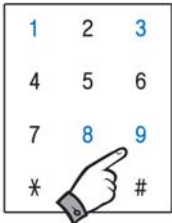
Door handle can now be rotated for access

NOTE

- Please keep manual override key in a safe, separate place for use in emergencies.

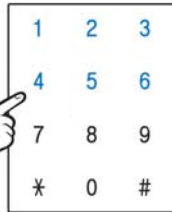
Random Security Coding

When you enter your home with other people present, you may not wish to show them your PIN code. If this is the case, you may press any numbers randomly without limitation, and then enter your PIN code as the final sequence. This will prevent others from seeing your PIN code.

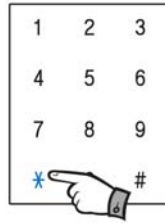


Enter in any random sequence of numbers you desire e.g 1389

+



After the sequence of random numbers is entered, enter your PIN to access e.g 123456



Press * to enter

Auto/Manual Locking

How to set auto/manual locking system

- In auto-locking mode, door will be locked automatically after it is closed.
- In manual locking mode, the door is locked by pressing the manual lock button after the door is closed.



Touch the front pad



Press #



Input user PIN

or



Touch card/fob



Press #



Press 5 for auto-locking mode

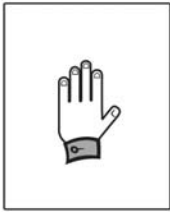
Press 6 for manual locking mode

NOTE

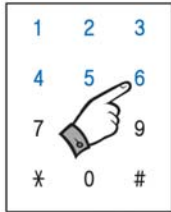
- Once mode has been set, pull down handle and close door.
- In manual locking mode, door can be unlocked by PIN, card/fob or by using inside handle.

Opening the Door From the **Outside**

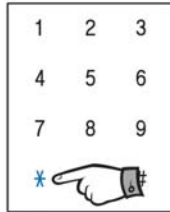
Opening the door using a PIN



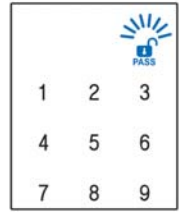
Touch the front pad



Enter PIN code e.g. 123456

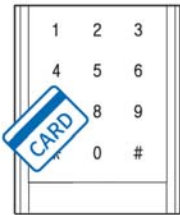


Press *



Pull down the handle and open

Opening the door using card/fob



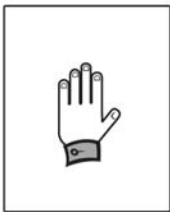
1. Touch the registered card/fob to contact point in centre of keypad
2. Pull down the handle and open the door

Opening the door using the fingerprint

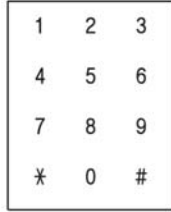


1. Open the fingerprint cover and place your finger on the sensor (fingerprint must be registered first see p.22)
2. Pull down the handle and open the door

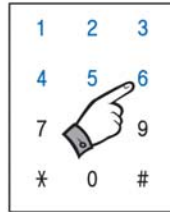
Open the door with the sound muted



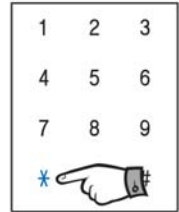
Press the front pad with finger tip for 3 seconds



The keypad will illuminate



Enter PIN code e.g. 123456. Card/fob or fingerprint can also be used



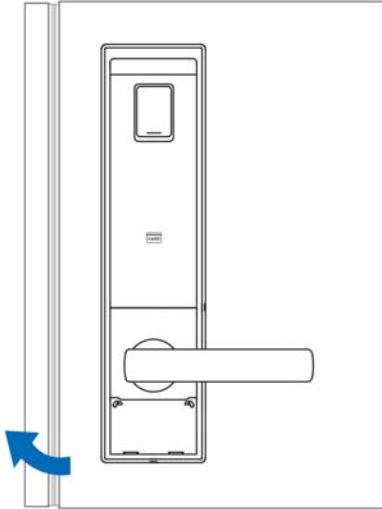
Press * and the door will unlock. Pull down the handle and open the door

NOTE

- Mute mode is sustained for 10 seconds.
- If the door handle is not used after applying one of the entry methods listed above, the unit will emit a sound and automatically re-lock after 7 seconds. This feature cannot be de-activated.

Locking the Door From the **Outside**

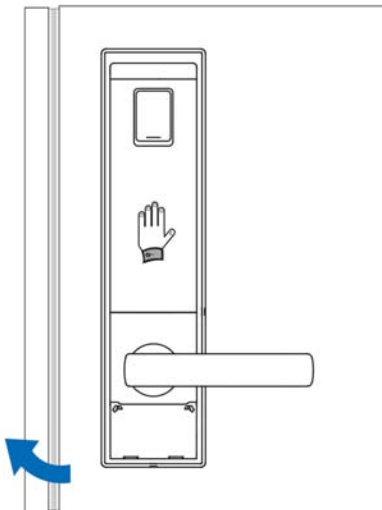
Locking the door in auto-locking mode



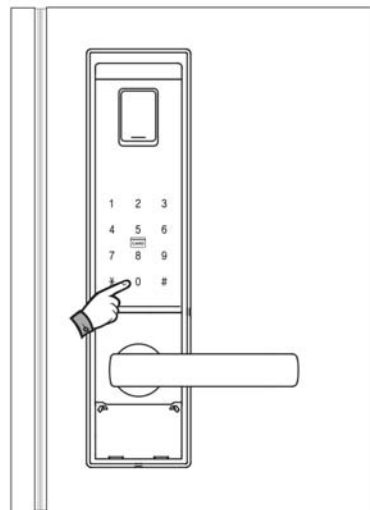
When the door is closed it is locked automatically and the unit will emit a sound to confirm the door has been locked.

If the door is not closed correctly, it will not be able to lock, and an alarm will sound. If the alarm sounds, please ensure that the door is closed correctly.

Locking the door in manual locking mode



Close the door and touch the front pad



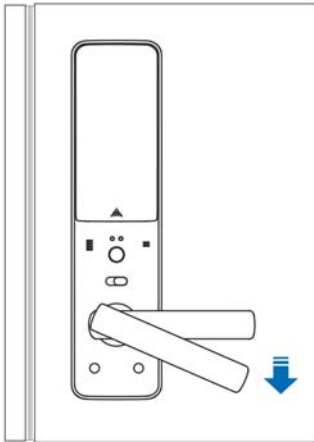
Press 0 and the door will lock

NOTE

- In manual locking mode, door will not lock automatically.
- Confirm the the door is closed/locked by pull down the handle.

Opening/Locking Door From the **Inside**

Opening the door from the inside

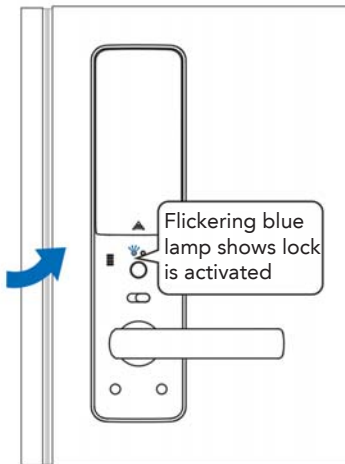


Panic Release Feature

The door can be opened from the inside at any time by simply pulling down the handle.

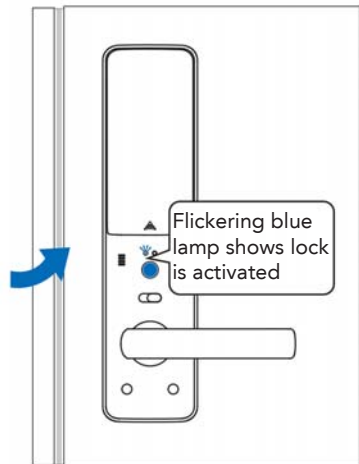
This feature allows easy escape in case of an emergency.

Locking the door from the inside



Auto-locking mode

When the door is closed, the door will lock and the unit will emit a sound



Manual locking mode

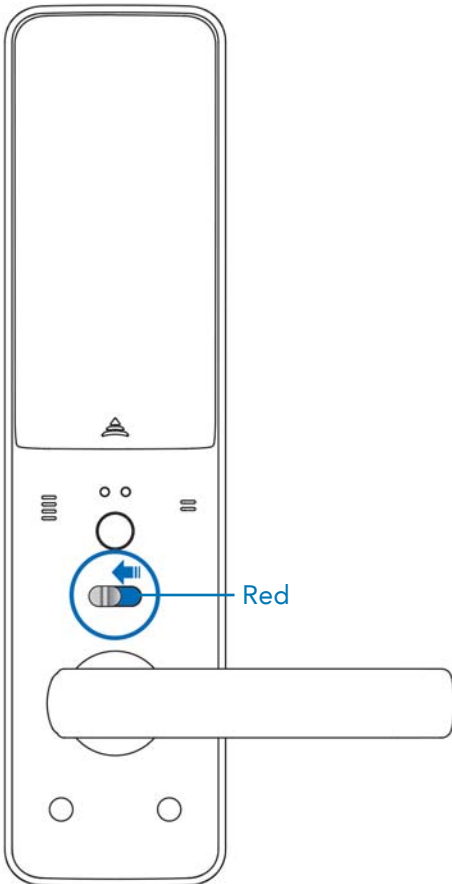
After closing the door, press manual lock button and the door will lock. The lock will emit a sound

NOTE

- Before closing the door, make sure that the deadbolt is not extended.
- If the door is not closed/locked correctly, a warning sound will be emitted.

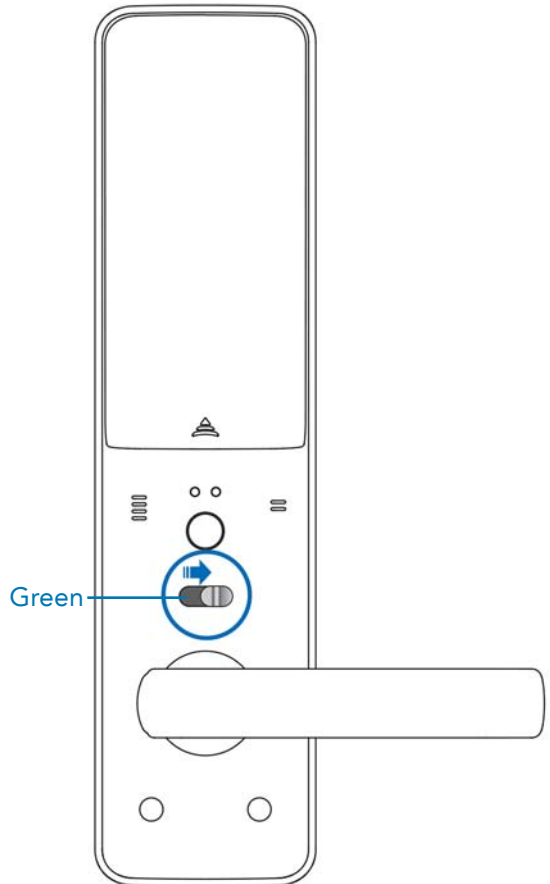
Privacy Function

Activating privacy mode so lock cannot be unlocked from the outside



Privacy mode ON

Door cannot be unlocked from the outside



Privacy mode OFF

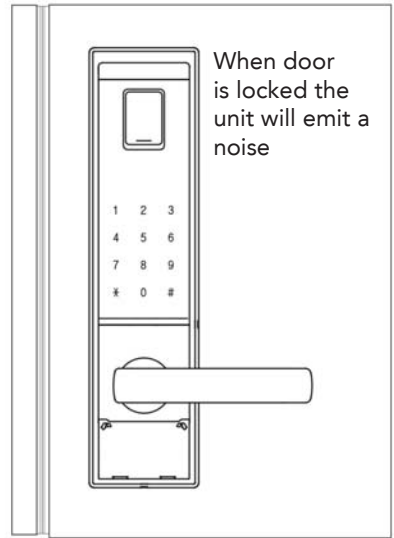
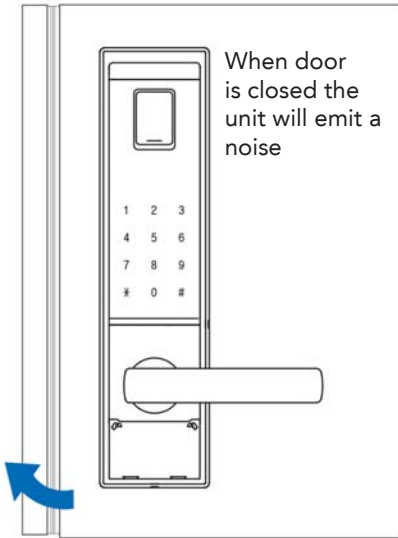
Normal operation. Door can be unlocked from the outside

NOTE

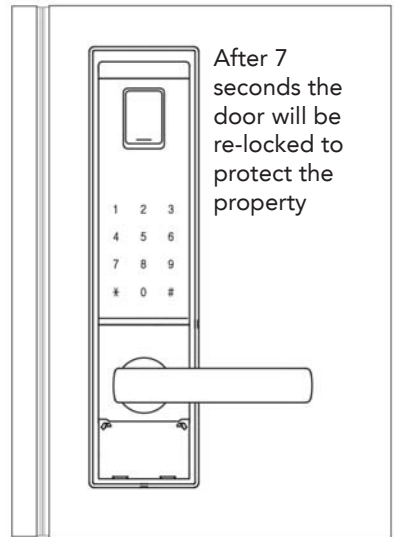
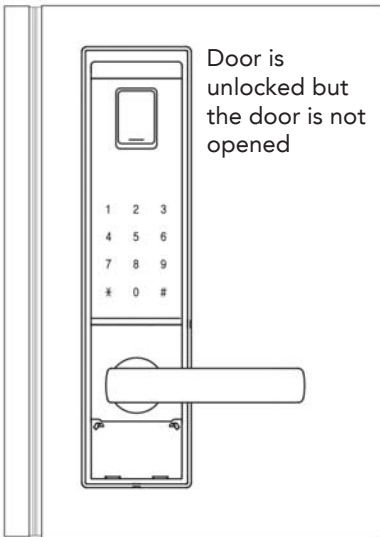
- Privacy mode can only be activated when the door is locked.
- Even in privacy mode the door handle is still able to be used from the inside. When the door handle is used from the inside, privacy mode is deactivated.
- The lock can be unlocked from the outside with the mechanical key, even when privacy mode is on.

Auto Locking Function

Auto locking system



Auto re-locking system



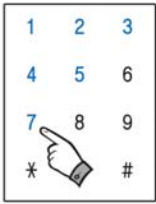
NOTE

- The auto-relocking system cannot be deactivated.

Alarm & Warning Functions

Preventing illegal entry and hacking

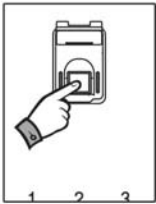
The unit will emit a strong alarm sound for three minutes in the following situations:



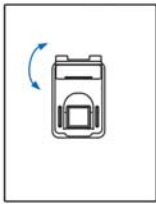
3 incorrect PIN entries



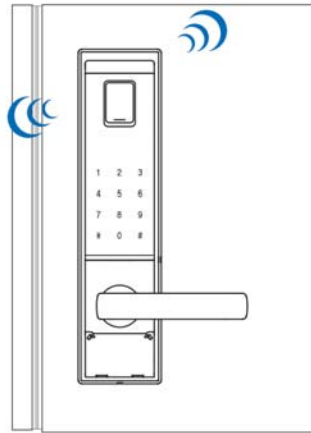
3 unregistered card/fob swipes



5 unregistered fingerprint applications



10 fingerprint cover movements

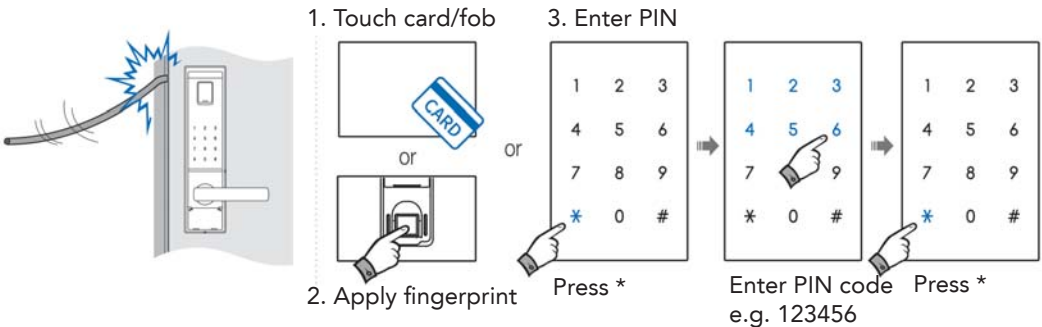


Alarm will cease to sound after three minutes

NOTE Fingerprint(s) must be registered for fingerprint alarms to sound.

Preventing forced entry

If an attempt is made to force the door or lock open, the unit will emit a strong alarm sound for three minutes. Follow the instructions below to stop the alarm sounding:



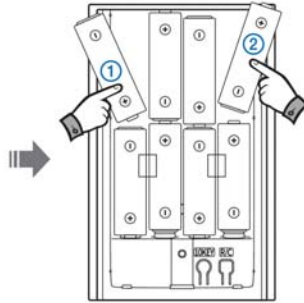
NOTE Manual lock button will stop the alarm sounding.

System Reset

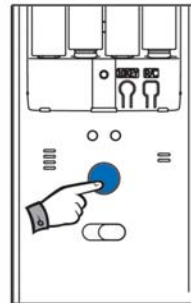
The unit can be reset to its factory settings by following these steps



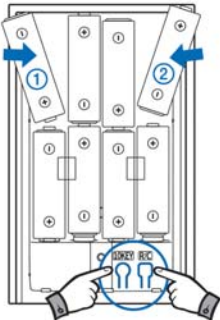
Open battery cover



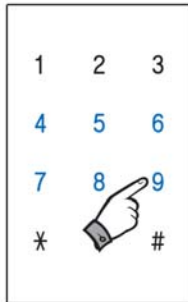
Remove batteries 1 and 2



Press open button to remove remaining charge

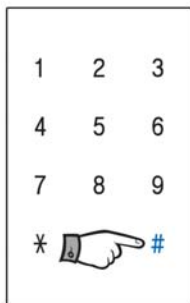


While holding down both the 10KEY and R/C buttons, insert battery 1, followed by battery 2



Input manager code e.g. 456789, or touch manager card

or



Press #

Factory settings

Manager code	Deleted
Manager card/fob	Deleted
PIN codes	Deleted
Cards/fobs	Deleted
Fingerprints	Deleted
Sound volume	7
Auto/manual locking	Manual
Suspend code/card/fingerprint	Released

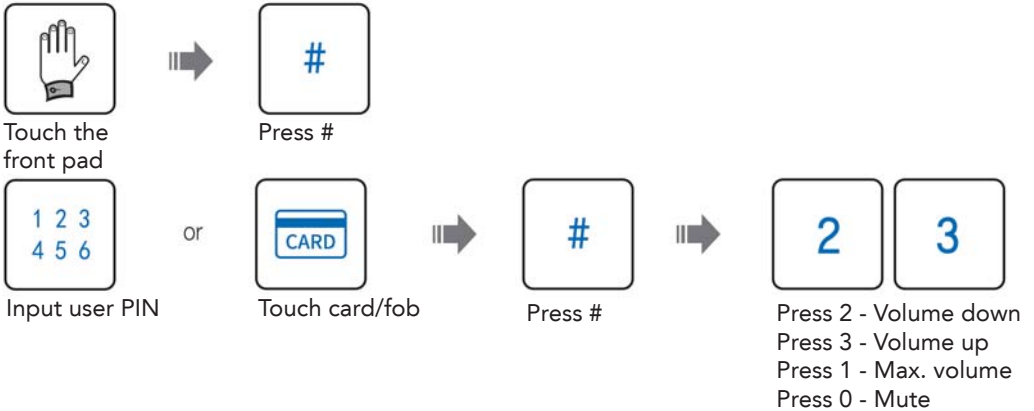
NOTE

To reset the system, the unit must be in safety mode (see p.18).

Setting **Volume**

How to control volume level

There are eight sound volume levels to choose from, ranging from mute to maximum



NOTE

- In mute status, keypad lamp will flicker when PIN is entered.
- Once volume has been set, pull down handle and close the door.

About Modes

NORMAL MODE

Normal Mode is quick and easy to use, and is the standard setting for the lock when new. Instructions for setting up codes, cards, fobs and fingerprints in Normal Mode are on pages 20-23.

SAFETY MODE

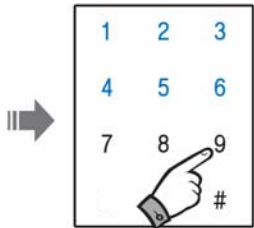
Safety Mode has been designed to provide additional security by limiting access to the programming functions of the lock, so that no changes can be made without entering a 'Manager Code'. Instructions for setting up codes, cards, fobs and fingerprints in Safety Mode are on pages 24-30.

Changing Modes

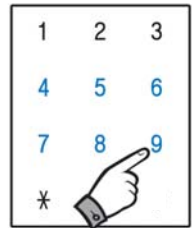
Normal Mode > Safety Mode



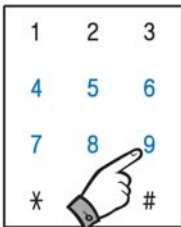
Open the battery cover, and press the R/C button for approx. 5 seconds



Enter PIN code



Enter new manager code e.g. 456789



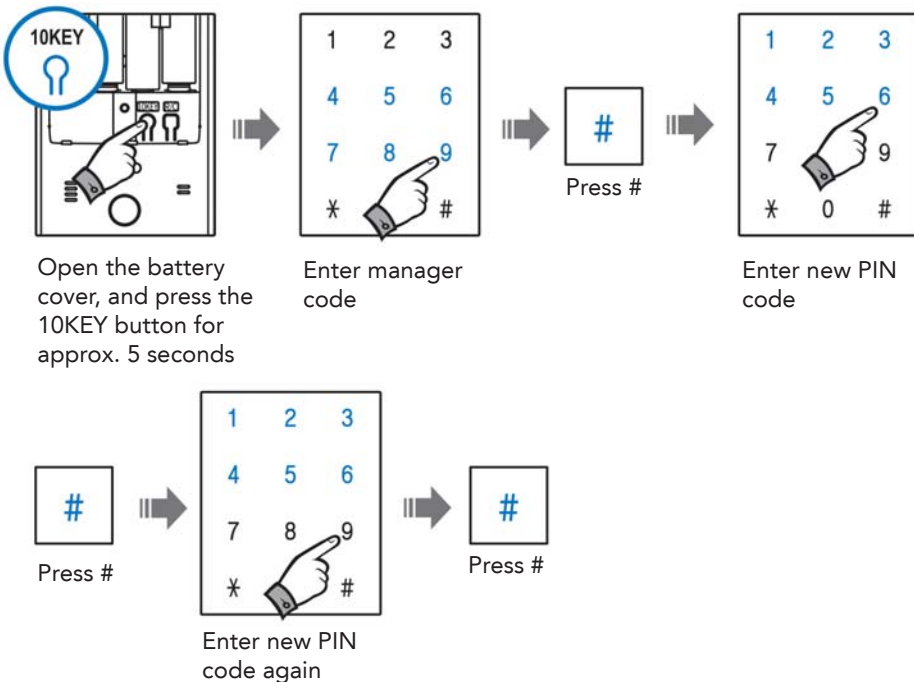
Enter new manager code again



NOTE

Please ensure that you can recall the manager code, as you will need it to manage the device once it is in Safety Mode.

Safety Mode > Normal Mode



NOTE

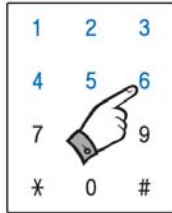
- Manager code and manager card should be controlled by authorised persons only for security reasons.
- Existing PIN, card/fob and fingerprint data is deleted automatically after registration of new manager code.
- Only one manager code can be registered, using 6 - 12 digits.
- After the manager code which was used in safety mode is entered and # is pressed, all existing PIN code/card/fingerprint data will be deleted. The newly registered code is for use in normal mode.
- To register multiple codes, input new user codes and press * successively.
- Make mode changes and the set-up of new codes when the door is open to prevent unintentional locking.
- After changing an entry code, verify it by unlocking the door with the new entry code.

Registering **Entry PINs**

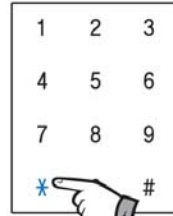
Registering entry PINs in normal mode



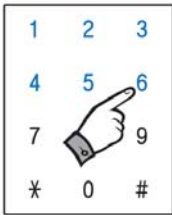
Open battery cover and press 10KEY



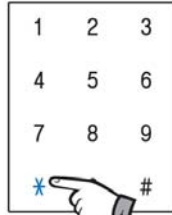
Enter new entry PIN e.g. 123456



Press * button - Unit will emit sound to confirm PIN has been set



OPTIONAL
Add additional PIN codes if required (one at a time)



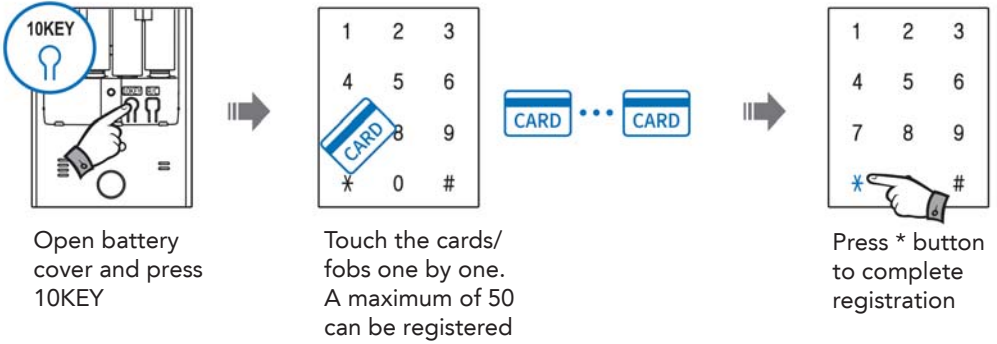
Press * to add another PIN, or press * twice to exit programming

NOTE

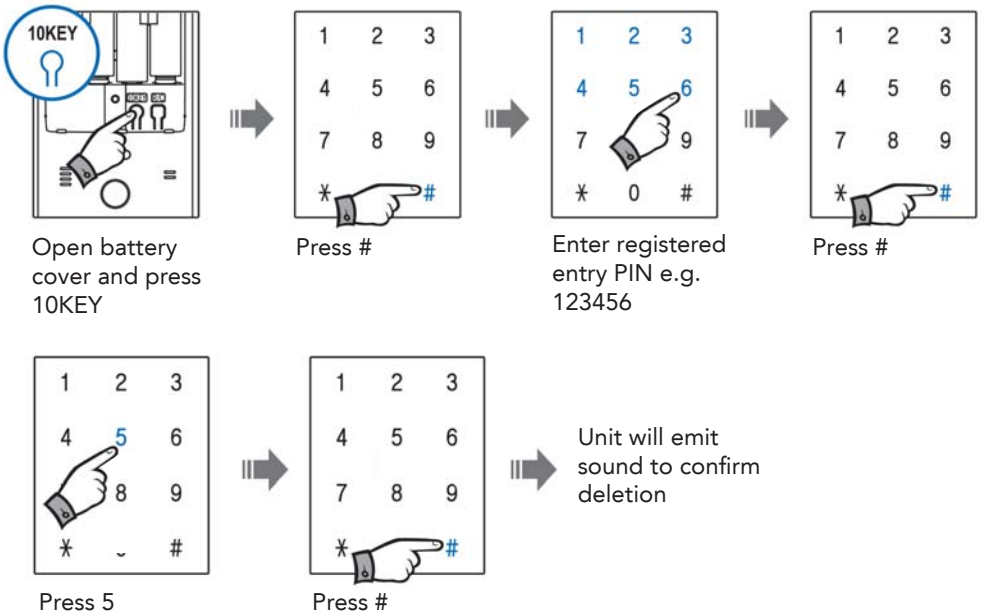
- Factory setting PIN code in normal mode is 123456.
- A maximum of 10 PIN codes can be registered with 6 to 12 digits each.
- Previous PIN code(s) are deleted automatically with registration of new PIN code(s)
- Set-up or delete new PIN codes when the door is open to prevent unintentional locking.
- After changing a PIN code or entering a new PIN code, verify it by unlocking the door with the new PIN code.

Registering and Deleting Cards & Fobs

How to register cards and fobs in normal mode



How to delete cards and fobs in normal mode

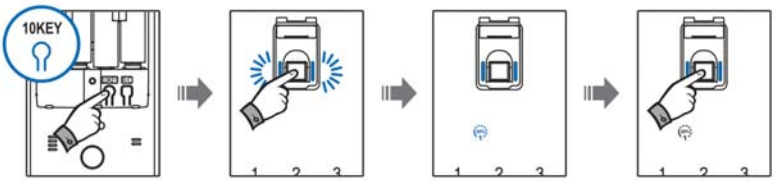


NOTE

- Previous card/fob memory is deleted automatically after registration of new card(s)/fobs(s).
- Max. 50 cards/fobs can be registered.
- For higher security, please use cards/fobs which are supplied by Schlage.

Registering and Deleting Fingerprints

Registering fingerprints in normal mode



Open battery cover and press 10KEY

Touch your finger on sensor (LED will illuminate)

First LED scan (unit will emit one sound)

Touch your finger on sensor again



Second LED scan (unit will emit one sound)



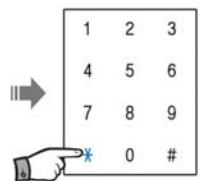
Touch your finger on sensor again



Third LED scan (unit will emit one sound)

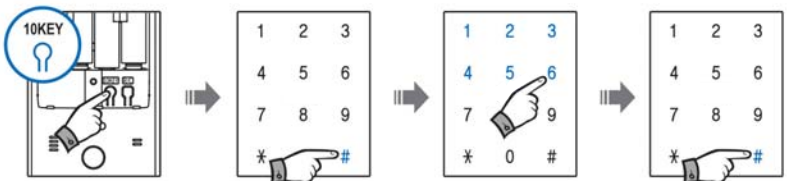


Unit will emit two sounds to indicate registration is complete



Press *

Deleting all fingerprint data in normal mode

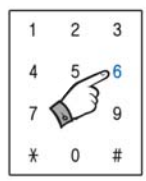


Open battery cover and press 10KEY

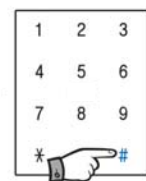
Press #

Enter registered entry PIN e.g. 123456

Press #



Press 6



Press #



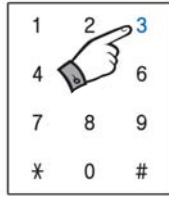
Unit will emit sound to indicate deletion complete

Registering and Deleting Fingerprints

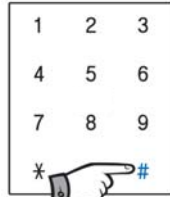
Registering fingerprints without the fingerprint cover in place



Open battery cover and press 10KEY



Press 3



Press #



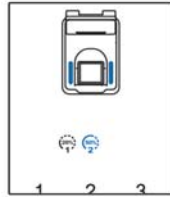
Touch your finger on sensor (LED will illuminate)



First LED scan (unit will emit one sound)



Touch your finger on sensor again



Second LED scan (unit will emit one sound)



Touch your finger on sensor again



Third LED scan (unit will emit one sound)



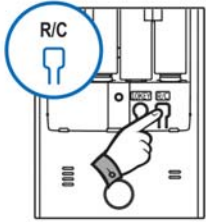
Unit will emit two sounds to indicate registration is complete

NOTE

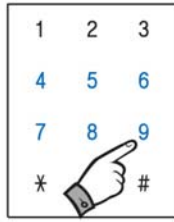
- Max. 100 fingerprints can be registered.
- Previous fingerprint data is not deleted when new fingerprint is registered.

Registering **Entry PINs**

Registering entry PINs in safety mode

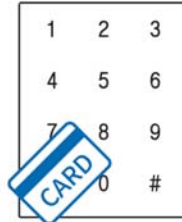


Open battery cover and press R/C key

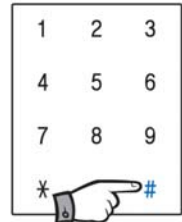


Enter manager PIN e.g. 456789

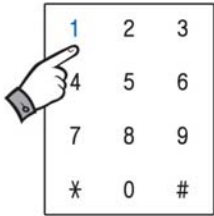
or



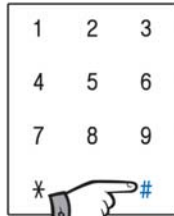
Or swipe manager card



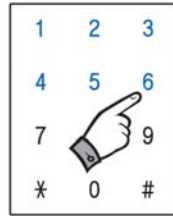
Press #



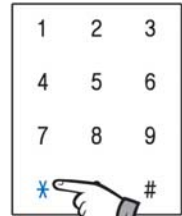
Press 1



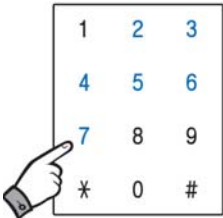
Press #



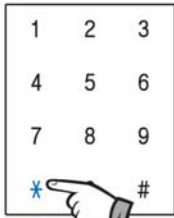
Enter new user PIN e.g. 123456



Press *



OPTIONAL
Add additional PIN codes if required (one at a time)



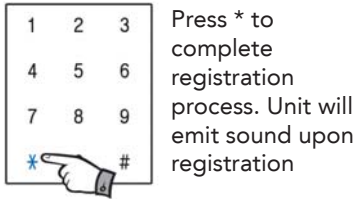
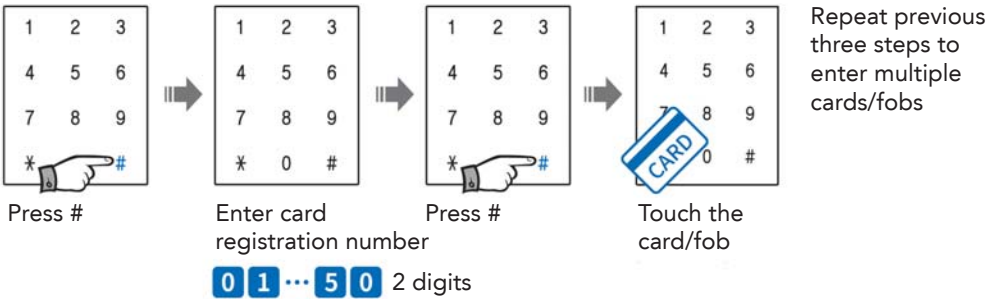
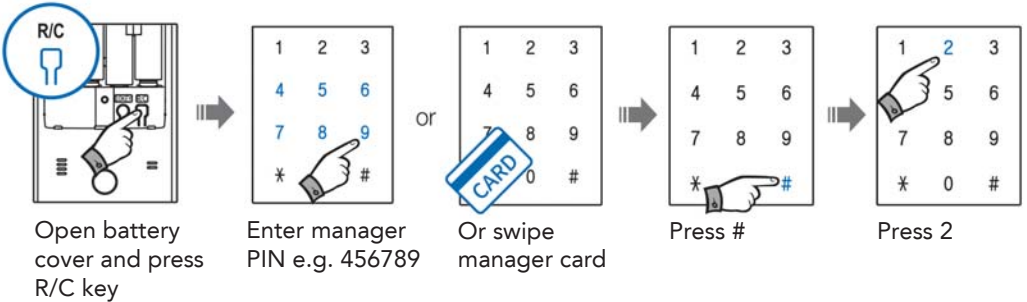
Press * to add another PIN, or press * twice to exit programming

NOTE

- Max. of 10 PIN codes can be registered, with 6 to 12 digits each.
- Previous PIN code(s) are deleted automatically with registration of new PIN code(s).
- Keep the door open when registering PINs to ensure the door does not lock unintentionally.
- After adding new code(s), please check them to verify they have been entered correctly.

Registering Cards & Fobs

Registering cards and fobs in safety mode

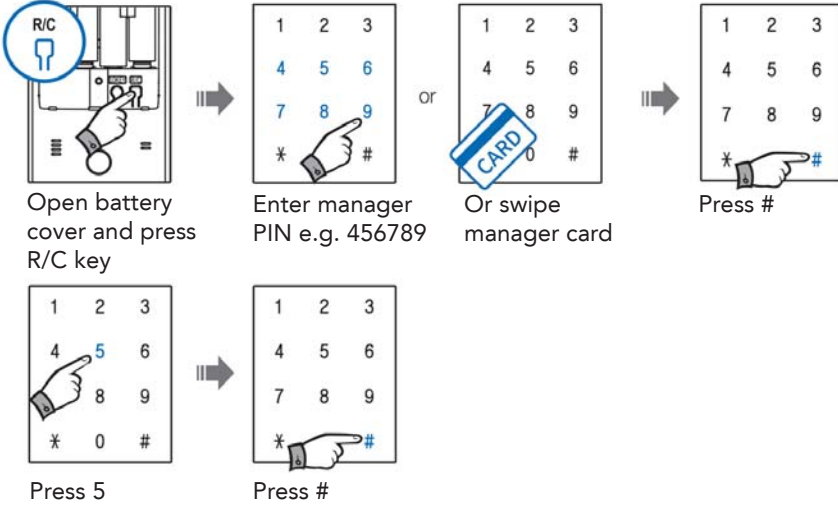


NOTE

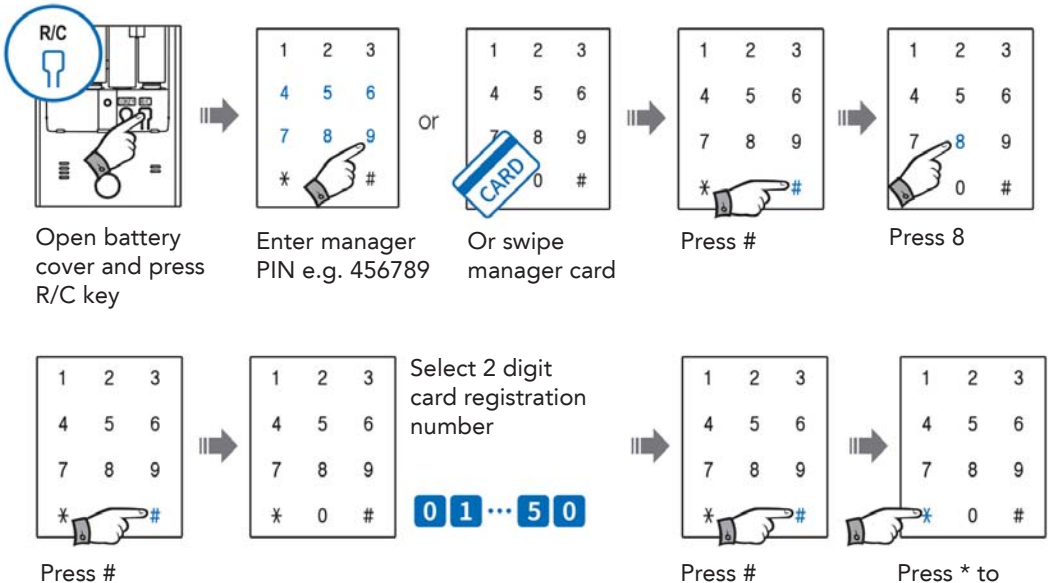
The registration number(s) should be two digits between 01 and 50.

Deleting Cards & Fobs

Deleting ALL card and fob data in safety mode



Deleting individual card and fob data in safety mode

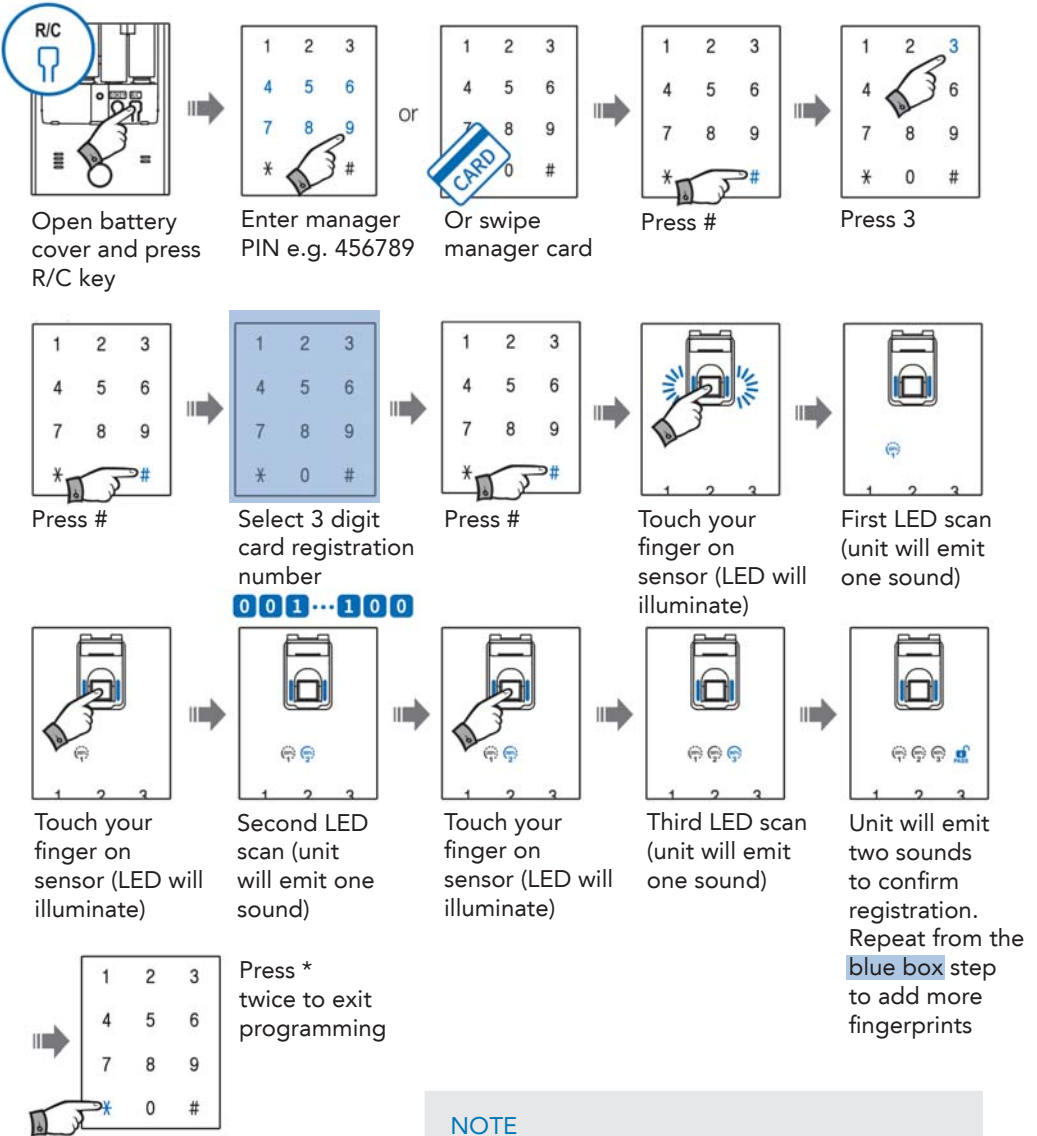


NOTE

Warning will sound if no card data exists for a registration number.

Registering Fingerprints

Registering fingerprints in safety mode

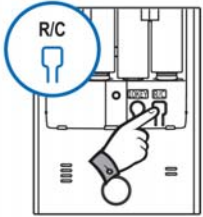


NOTE

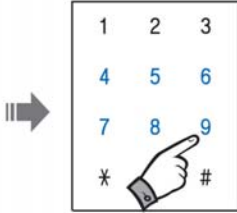
- The registration number(s) should be three digits between 001 and 100.
- Warning will sound if the number is not three digits.

Deleting Fingerprints

Deleting ALL fingerprints in safety mode

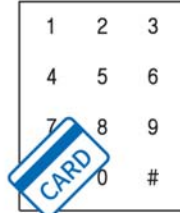


Open battery cover and press R/C key

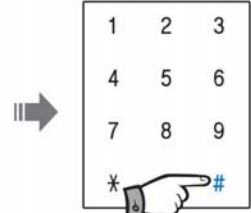


Enter manager PIN e.g. 456789

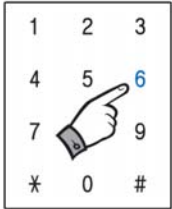
or



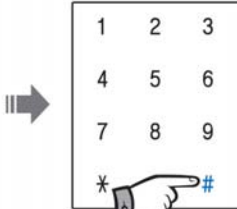
Or swipe manager card



Press #

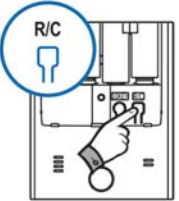


Press 6

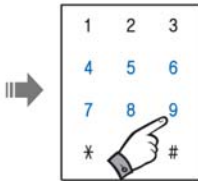


Press #

Deleting individual fingerprints in safety mode



Open battery cover and press R/C key

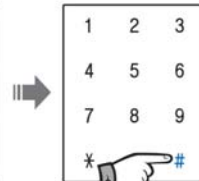


Enter manager PIN e.g. 456789

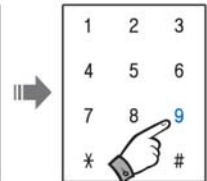
or



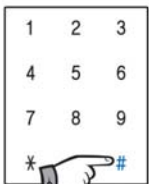
Or swipe manager card



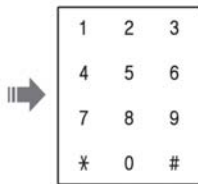
Press #



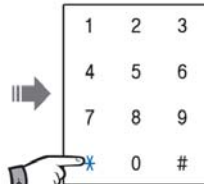
Press 9



Press #



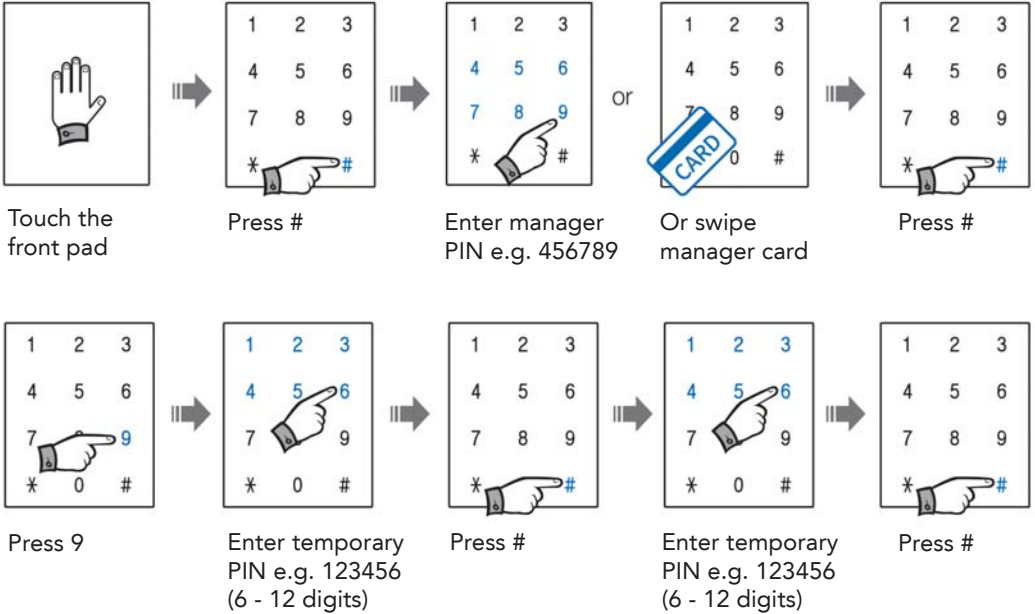
Select 3 digit fingerprint registration number



Press * to exit.

Creating Temporary User PINs

Registering temporary user PINs in safety mode



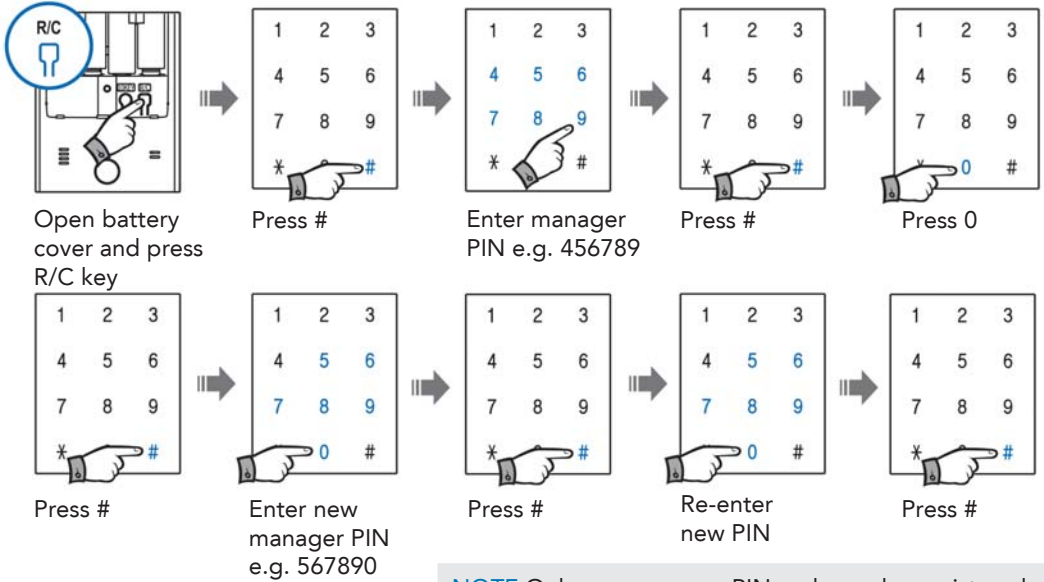
NOTE

- Temporary PIN will be deleted after one use.
- Temporary PIN can only be used in safety mode.
- Only one temporary PIN can be registered.

Changing Manager PIN or Card/Fob

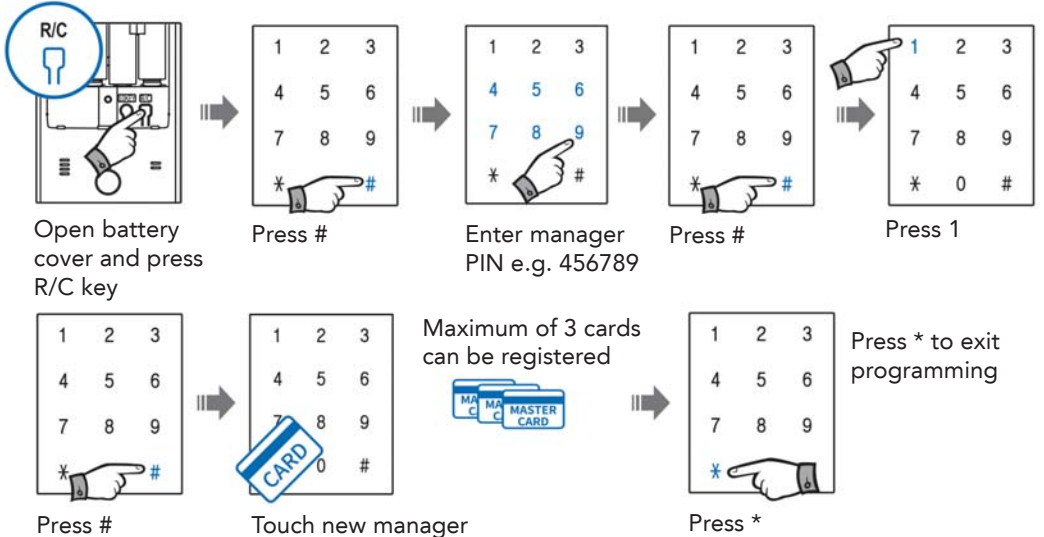
Changing manager PIN code in safety mode

(Note: see page 18 to change from normal mode to safety mode)



NOTE Only one manager PIN code can be registered

Changing manager card/fob in safety mode



NOTE

Changing manager card/fob deletes all existing manager card(s)/fob(s)



Allegion (Australia) Pty Ltd
Phone 1800 098 094
www.allegion.com.au

Allegion South East Asia
Phone +65 6488 2562
www.allegion.com

Allegion (New Zealand) Limited
Phone 0800 477 869
www.allegion.co.nz